

LeMoyne Arts

CREATING COMMUNITY
THROUGH ART

LeNews

A quarterly newsletter highlighting exhibits and events - Summer 2021

In This Issue

- Events & Exhibits
- Letter from our President
- Art for Always Update
- Call to Artists & Summer Camps
- Volunteer & Intern Spotlight
- New Permanent Collection
- Appreciations & New Members

Coming this Fall...

WOMEN AMONG US PORTRAITS OF STRENGTH



October 14 - October 30

Featuring 17 photographic portraits of local, professionally accomplished women aged 65 or older, accompanied by haikus and biological narratives about the subjects. In a concerned effort to convey the depth and richness of their experience, all 17 women took the time to share their stories, each as individuals and as the women themselves. The collection is a collaboration by Becki Rutta, Mary Jane Ryals, Lynne Knight, Eleanor Dietrich, and Linda Hall.

Art & Soul CELEBRATION LA RENAISSANCE THURSDAY, OCTOBER 21, 2021 5:30-8:30PM

Join our Celebration! La Renaissance - LeMoyne Arts is experiencing a new chapter, a rebirth, in its long history. Coming out of the pandemic with an enthusiastic new staff, improved facilities, and a renewed commitment to our mission.

To celebrate, LeMoyne Arts is hosting our annual Art & Soul Celebration, Gala and Auctions on Thursday, October 21 from 5:30-8:30pm. Support the arts at this delightful garden party and enjoy heavy hors d'oeuvres, live music, an open bar, performance artists from Pas de Vie Ballet, a silent auction, and the highly anticipated live auction.

LeMoyne Arts

850-222-8800
contactus@lemoyne.org
125 N. Gadsden Street,
Tallahassee FL 32301
LeMoyne.org



Current Exhibit

Tallahassee Watercolor Society's 33rd Tri-State Juried Water Media Exhibition

May 21st - July 24th

Explore an exhibit of 37 juried watercolor artists displaying a wide range of styles and themes in the exploration of watercolor techniques.

Artist Talk: Watercolorist Michele Kimbrough

Wednesday, July 7th
5:15 PM - 6:00 PM

Join us for a special glimpse into watercolorist Michele Kimbrough's art practice and thought process during this exclusive artist talk. Free for LeMoyne Arts members, \$5 for non-members

Upcoming Exhibits

Color Theory: An Exploration of Pigments

August 5 - August 28

Opening Reception:
Thursday, August 5, 5:00-7:30PM

Muffins & Mimosas Reception:
Saturday, August 7, 11:00AM-Noon

Film Screening:
Fools Journey by Jae House
Friday, August 20, time TBD

Color Theory w/ Dr. Preston McLane:
Tuesday, August 24, 5:30-7:30PM

Figures in Form: Barbara Balzer & Lesley Nolan

September 9 - October 9

Opening Reception:
Thursday, September 9, 5:00-7:30PM

Muffins & Mimosas Reception & Artist Talk w/ Lesley Nolan:

Saturday, September 11, 11:00AM-Noon

*All events are free for LeMoyne Arts Members, \$5 for non-members

Letter from Our President



As I sit down to write this letter to our members, I am thinking of all that has taken place here at LeMoyne over the past several months. The descriptive words that come to mind are rebirth, revival, renewal, and even renaissance. The dictionary defines renaissance as "...a period of vigorous artistic and intellectual activity." And this is just what your management team here at LeMoyne is accomplishing!

We are ensuring a rebirth of our educational programs. As you read this, LeMoyne is completing its purchase of the law firm building next door, which will soon become our new art education center. I thank the Tallahassee Community Redevelopment Agency for their million dollar grant towards this estimated \$2.1 million project, helping to make our Art for Always vision a reality.

A special thank you goes out to Kelly and Laurie Dozier for committing to match, dollar for dollar, every donation to the capital campaign up to a maximum of \$250,000 as we raise the additional funds to complete this major project. We have received several substantial donations qualifying for this match, including one Leadership level donation of \$100,000. But, don't worry, there is plenty of match left for you to donate and participate in our exciting LeMoyne renaissance.

Moreover, we soon will experience a revival of our well-loved Helen Lind Sculpture Garden. A very generous \$100,000 gift from retired Florida State University professors Charles and Persis Rockwood was made in honor of former Florida State University faculty member and LeMoyne Arts supporter sculptor George Frederick "Fred" Holschuh and his wife Hila. The Rockwoods' gift is specifically for the improvement of the LeMoyne gardens and grounds to make the four Holschuh sculptures in LeMoyne's garden more visible and accessible.

Our day-to-day operations are seeing a renewal of expertise, enthusiasm and efficiency. A very special thank you to Kelly Dozier who, for the last six months, has volunteered to serve as our Acting Executive Director. With her extensive management skills, she has reorganized operations, recruited and trained an incredible new staff, and prepared us for an amazing future.

And, in a flurry of artistic activity, we are once again presenting our major events and gallery shows after months of closures due to the pandemic. This year's Chain of Parks Art Festival was a huge success. Artists reported record sales and attendees appeared to thoroughly enjoy themselves. With pandemic restrictions easing, masks are no longer required in the gallery for visitors who are fully vaccinated. Our current exhibit, Tallahassee Watercolor Society's 33rd Tri-State Juried Water Media Exhibition, continues through July 24th. This is a fabulous show and you ought not to miss it. This exhibit will be followed by a show called "Color Theory, an Exploration of Pigments" opening with a reception at 5PM on August 5th. Mark your calendars so you won't miss these "must see" exhibitions.

And finally, a special thanks to all of you. LeMoyne's "renaissance" would not be possible without your support. You keep LeMoyne Arts working, providing art education, promoting interest and participation in the arts, and, as we like to say, *Creating Community through Art!*

Thank You to Our Grantors for Their Support



LeMoyne Arts

BOARD OF DIRECTORS

President

Paul Craft

Vice President

Stephanie Whitfield

Secretary

Dianne Perkins

Treasurer

Kaye Kendrick

Artist Representative

Dan Taylor

Immediate Past President

Pamala Doffek

Acting Interim Executive Director

Kelly S. Dozier

Board Members

Grace Atkins

Lindsey Bradley-Brown

Rachel Borntreger

Jami Coleman

Andra Cornelius

Susan Fiorito

Paula Fortunato

Trimmel Gomes

Gene Madden

Cicely Mason

Kevin McAlpine

Dylan Rivers

Mary Jo Spector

Abby Vail

Field Wilde

STAFF

Acting Interim Executive Director

Kelly S. Dozier

Operations Director

Arielle Raff

Programming Director

Powell Kreis

Education Director

Kylie Nerney

Assistant Education Director

Lane Haugh

Office Manager

Danielle Dozier

Gallery Assistants

Christen Bloyd-Wooland

Caroline Kuhlmeier

FESTIVAL STAFF

Festival Chair

Kelly S. Dozier

Festival Manager

Powell Kreis

Artist Relations Manager

Sheri O. Sanderson



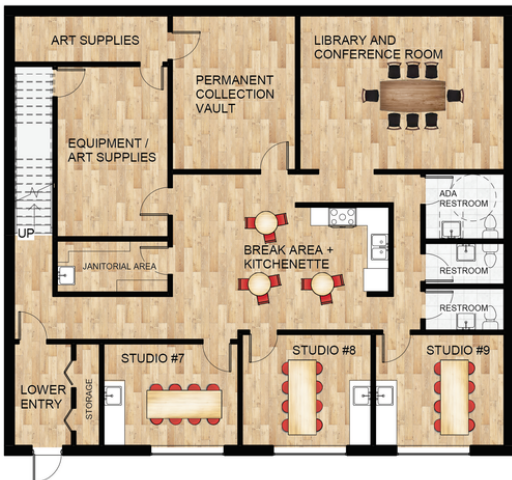
Street View Mock-Up

Art for Always Capital Campaign Report

The Art for Always Capital Campaign is experiencing remarkable success. As we go to press, LeMoyné has received just over \$1,500,000 in cash and pledges toward the overall goal of \$2,700,000 -- \$2,200,000 will be used to create the region's premier art education center, to enhance and revitalize the present gardens and galleries and \$500,000 will be used to establish a facilities endowment. Please join your resources with those who have already donated and DOUBLE THE IMPACT OF YOUR GIFT through the Kelly and Laurie Dozier challenge grant that matches Art for Always contributions dollar-for-dollar up to an aggregate of \$250,000. In order to qualify for the match, your gift must be received by July 31. Gifts in any amount are most welcome or you may want to capture the spirit of LeMoyné by contributing at a level that will

name a specific location in the new art education center, the gardens or other designated area. To help with your decision, LeMoyné representatives will be happy to give you a guided tour of LeMoyné, the gardens, and the new building or visit with you in your home or office.

To Make Donation Inquiries please email, text or call Paula Fortunas at 850-933-2770 or PaulaFortunas@gmail.com Thank you very much for your favorable consideration. If donating by check, please make out your check to LeMoyné Arts, and mail to:
125 North Gadsden Street
Tallahassee, Florida 32301
Please write Art for Always on the check's memo line.



Interior proposal by Conn Architects

Dozier Matching Challenge

Tallahassee, Fla -- LeMoyné Arts is pleased to announce that Kelly and Laurie Dozier, owners of Mad Dog Construction, have committed to match, dollar for dollar, up to a maximum of \$250,000, every donation to LeMoyné's newest capital campaign, Art for Always. This gift will have substantial positive effects on our region's cultural climate, accessibility to art for all ages, and the long-term success of our youth. The Art for Always capital campaign will provide the necessary funding to complete the acquisition and renovation of the new home for LeMoyné's education program and the expansion and revitalization of LeMoyné's popular sculpture gardens. LeMoyné recently was awarded a \$1 million Arts, Culture and Heritage Grant from Tallahassee's Community Redevelopment Agency to go towards the purchase of the adjoining property south of the Gallery, which includes a two-story 6,264 square foot office building, 20 parking spaces, and a small garden area. Acquisition of this property will enable LeMoyné to create modern, accessible classrooms and studios and implement its ambitious program for arts education and investment in our area's youth.

ages and economic levels, promoted and supported the work of local artists, and generated millions of dollars for our local economy through events such as the Chain of Parks Art Festival held this past April. LeMoyné's education programs have nurtured the artistic talent of four generations of Tallahassee families. The Challenge Gift by the Doziers will ensure LeMoyné will continue its mission of service to our community.

The integration of business success with civic responsibility is a guiding principle for Kelly and Laurie and has led both to serve in numerous community organizations and projects. Among her many awards, Kelly Dozier received the Tallahassee Democrat's "Volunteer of the Year Award in the Arts" for her work supporting the arts and her other volunteer efforts for the community. She was also awarded the "President's Call to Service Award" for outstanding volunteer efforts by President George Bush and the Richard L. Puckett Award for Leadership in the Arts. Kelly serves on the Boards of TMH and LeMoyné Arts. Laurie Dozier currently serves on the Boards of Whole Child Leon, The Village Square and is a member of the Leadership Council of FSU's College of Arts and Sciences. Mad Dog Construction itself was the first Tallahassee business to be recognized as a "Volunteer of the Year" IN 1985 by the Tallahassee Chamber of Commerce.



Laurie & Kelly Dozier

LeMoyné Arts has been at the heart of Tallahassee cultural and visual arts for nearly 60 years. Its signature events are an important part of our community's cultural life. LeMoyné has made the arts more accessible to people of all

CALL TO ARTISTS

For more information and applications, please visit LeMoynes.org/calltoartists

COLOR THEORY: AN EXPLORATION OF PIGMENTS

APPLICATION DEADLINE:
FRIDAY, JULY 9TH

LEMOYNE ARTS IS LOOKING FOR
MONOCHROMATIC ARTWORK.
ALL MEDIA & SIZES WELCOME!



2D ABSTRACT & MINIMALIST ARTISTS

APPLICATION DEADLINE:
FRIDAY, AUGUST 13TH

LEMOYNE ARTS IS LOOKING
FOR 2D ABSTRACT AND
MINIMALIST ARTISTS TO
ACCOMPANY THE FIGURATIVE
CERAMIC WORK OF BARBARA
BALZER AND LESLEY NOLAN.
PLEASE SUBMIT UP TO 10
PIECES FOR CONSIDERATION.
LEMOYNE WILL PICK THE
WORKS THAT ARE BEST
SUITED FOR THE EXHIBIT.

LeMoynes Arts
58th Annual Holiday Show:
**ART DECO
THE HALLS**
APPLICATION DEADLINE:
FRIDAY, SEPTEMBER 17TH
This year, there will be an
overarching theme relating to Art
Deco, Black & Gold, 1920s glamour.
Creating work inspired by the
theme is encouraged, but not
required.

LeMoynes Arts PRODUCTIONS

2021 Summer Art Camp
Exploring genre through art

 Forests of Fantasy
July 5 - 16

Wild Wild West 
July 19 - 30

 Supersonic Sci-Fi
August 2 - 13

FULL DAY FEE:
LEMOYNE ARTS MEMBERS: \$350
NON-MEMBERS: \$380

HALF DAY FEE:
LEMOYNE ARTS MEMBERS: \$175
NON-MEMBERS: \$190

FEES INCLUDE A NON-REFUNDABLE
\$100 CAMP DEPOSIT

FOR MORE INFORMATION
PLEASE VISIT
LEMOYNE.ORG



DEVELOP YOUR ART SKILLS AND CREATE AMAZING WORK!

SESSIONS:
JUNE 21 - JULY 16: SESSION ONE
JULY 19 - AUGUST 13: SESSION TWO

1-WEEK SESSION CAMP
MEMBERS: \$175
NON-MEMBERS: \$190

FULL 4-WEEK SESSION CAMP
MEMBERS: \$700
NON-MEMBERS: \$760

MORE INFORMATION AND REGISTRATION
AVAILABLE AT
WWW.LEMOYNE.ORG/ARTCAMP



LeMoynes Arts
**Teen
Foundations
Art Camp**
2021



★ VOLUNTEER SPOTLIGHT

AUNTS (& UNCLES) IN THE GARDEN!

For the past 10 months Sarah Marie Sherraden and Jeanne Breland have been hard at work restoring the Helen Lind Garden back to its original design. Through weeding and mulching, all permanent collection sculptures and fountains are no longer hidden in the overgrowth, and are now present and highlighted by the landscaping. Recently, it's become family practice as the aunts' husbands, Terry Sherraden and Jabe Breland, have pitched in to restore picnic benches in time for LeMoyné Arts Summer Camp. The Studio A courtyard has become a popular spot for campers to eat lunch and appreciate LeMoyné's abundance of lizards.

The addition of sails above the patio allows for a relief from the summer sun without disrupting the beauty of the landscaping. Thank you to Kelly and Laurie Dozier, Andrew Sherraden, and Keith Hampton for assembling the sails.

The love and dedication put into its upkeep is apparent upon visiting the garden. We encourage all to come view the Helen Lind Garden during gallery hours. It's a perfect spot to catch up with friends or to unwind while feeling closer to nature. For information on booking the garden for your event, please contact Arielle Raff at 850.222.8800 or arielle@lemoyne.org.



★ INTERN SPOTLIGHT

LeMoyné archive intern Mia Gonzalez is a rising Senior at Florida State University studying Business Administration with minors in Art History and Museum Studies. She joined LeMoyné in April, bringing her experience and her laptop to the task of cataloging the contents of the archives and creating an accessible database that corresponds with the physical records. Her work gives us a digital record of historical events, exhibits and collaborations through the years with artists, museums and organizations. Her keen sense for working with this material is matched by her quick thinking, professional demeanor, and ability to adapt to other roles as needed. Indeed, she is a

valuable team player. Mia's previous work experience includes FSU's Museum of Fine Arts where she developed programming, gave tours, learned art handling techniques, and engaged critically, ethically, and professionally with artworks and artists. As a board member of FSU's College Leadership Council for the College of Fine Arts (cfa.fsu.edu), Mia recently co-edited an issue of the annual SIX Magazine. The issue features her own work inspired by Marcel Duchamp's *Boîte en Valise* (*Box in a Suitcase*). Mia is interested in having a lead role in creative direction and museum curation. We are confident that Mia will have a successful and fulfilling career path.



1. A crowd gathers to celebrate the opening of Tallahassee Watercolor Society's 33rd Tri-State Juried Water Media Exhibition.

2. LeMoyné bartender and volunteer, Henry Wingfield, shows off limited run Zerbe Beer, a collaboration with Proof Brewery for April's Zerbe Zelebration.

Thank You for Your Kindness

Mary Adelson	For maintaining our fountains and creating beautiful holiday light displays
Dan Taylor	For maintaining LeMoyne Arts' Permanent Collection
Pam Doffek	For cataloging LeMoyne Arts' Permanent Collection
Bob O'Lary	For photographing LeMoyne Art's Permanent Collection
Katie Clark	For photographing LeMoyne Art's Permanent Collection
David Campbell	For membership outreach
Gene Madden	For membership outreach
Susan Frisbee	For donating stained glass supplies
Kelly S. Dozier	For repairing vacuums
Shirley McFadden	For polishing the main stairwell banister
Mark Dickson	For sculpture maintenance

Check out our Amazon wish list for an easy and direct way to support Lemoyne Arts!

Access a our Amazon wish list at Accounts & Lists > Find a List or Registry > Your Friends > Search "LeMoyne Arts".

Set LeMoyne Art Foundation as your non-profit on Amazon Smile. Amazon will donate 0.5% of your purchase to the non-profit of your choice!

GIFTING SEASON YEAR 'ROUND

Since rebranding and relocating our Gallery Shop back in October 2020, it has been a major attraction. With our displays constantly rotating and new artists coming in, there is always something new to see. We currently support 51 local and regional artists who offer a variety of work from jewelry to ceramics and everything in between.

"There's always something new and I'm constantly looking for gifts for family and friends. With our wrapping services you can walk out with your purchase ready to be given. It's a great all-in-one gifting experience!" says LeMoyne Arts Gallery Assistant, Christen Bloyd Wooland.

If you are interested in selling your work in our Gallery Shop, please visit our webpage for more information and application, www.lemoyne.org/shopapplication.



ROBERT AND JANICE HARTWELL - PERMANENT COLLECTION DONORS, 2021

Thank you to Bob and Janice Hartwell for their generous donation to LeMoyne Arts Permanent Collection!

Janice and Bob received advanced art degrees at University of Massachusetts, and the University of Wisconsin respectively. Janice is Professor Emerita of Art (print making) at FSU after 38 years of teaching. Bob was exhibit curator (history and natural history) for an equal amount of time, coming to Tallahassee in 1974 after working in museums in Wisconsin, Michigan, and Oklahoma, where he also taught life drawing. Janice is a former LeMoyne Arts board member and is pleased to see the recent improvements the staff has made

"Nancy and Jimmy Gunn were good friends of ours. We met back in the early days of LeMoyne, where we felt like we were visiting family and the exhibitions there were an opportunity to follow up on our previous conversations. LeMoyne's receptions were usually first stop on our entertainment for an evening, followed afterward with dinner or movies. Nancy and Jimmy were both active in the original creation and organization so naturally we got

involved as well. Both were well travelled, art educated, interested in music, art, theater, and active ambassadors of the LeMoyne Foundation." Bob reflected, "Having their artwork in our home all these years has kept us close to their spirit, our times together, and given us an appreciation of the value LeMoyne brings our community."

Untitled, 1988

Nancy Reid Gunn's encaustic work is playful, illusive, and adventurous. The medium itself demands patience, a restrained hand, a desire for abstraction, and an arduous search for the soul. Though her final piece is unsigned, it is a special piece, demonstrating her many talents and unique style. Bob and Janice enjoyed having this piece in their home for many years but wanted LeMoyne Arts to have it (along with many of her sketches), knowing that's what Nancy would have wanted.

Paris Early Morning, 1979

James Gunn's Paris, Early Morning, connects him to his European ancestry, his cool understated person-

ality, and the precision of his musical mind. The viewing perspective brings forth his fascination with design complexity and architecture. The viewing perspective brings forth his fascination with design complexity and architecture.

Cycles of an Inland Sea: Unbeing Myself, 1961

Cycles of an Inland Sea: Unbeing Myself, is a print made by Arthur Deshaies in 1961. He used a unique technique by clamping a wood frame to a big table and filling the void with wet plaster. Then, he waited until it was almost set and carved into it to create the relief areas, which is where the black would print. He used electric Dremel tools to speed up the process and leave a pattern. The plaster artwork had to be finished within one hour. Then the plaster was cured for two days or more, and then rolled up in black ink and printed by hand with rollers or a leather barren, until it was fully inked. The print was removed and allowed to air dry on a flat surface. Mr. Deshaies is one of very few artists who used this technique, done on a special press in New York City.



Untitled, 1988



Paris Early Morning, 1979



Cycles of an Inland Sea: Unbeing Myself, 1961



Suzanne Swann Laws (1947-2021)

Recently, LeMoyne lost a dear friend, Suzanne Laws. LeMoyne Arts sends its condolences to the family and friends of Suzanne Laws. Suzanne was a long time volunteer and supporter of LeMoyne and will be sorely missed.

Tallahassee - After residing in Big Bend Hospice, Inc., in Tallahassee, Florida for days, and after a courageous battle with cancer, Suzanne Swann Laws transitioned peacefully to her heavenly home on the morning of May 9, 2021. Born in DeFuniak Springs, Florida on February 4, 1947, Suzanne was the oldest daughter of Walter Oliver Swann and Ossie Bobbitt Swann.

Suzanne was a founding member of LeMoyne Arts. In addition to serving on the Board of Directors and taking classes, she was a major donor and events sponsor. Suzanne could be found volunteering behind the scenes at the Chain of Parks Art Festival and Art & Soul Celebrations.

Dr. Persis Emmett Rockwood (1924-2021)

We regret to share the recent loss of a dear friend, Dr. Persis Rockwood.

Persis and her husband Charlie recently donated to LeMoyne's Art for Always campaign with the specific goal of restoring the Helen Lind Sculpture Garden at LeMoyne. Persis was a trailblazer for women in business and education, a lover of art and culture, and philanthropist. LeMoyne Arts send its condolences to family and friends of Dr. Persis Rockwood.

Tallahassee - Professor Emeritus Persis Rockwood passed away May 31, 2021, at her home in Tallahassee. She is survived by her husband of 54 years, Charles E. Rockwood.

Always generous supporters of the arts and music community, Persis and her husband, Charles, made a generous donation to the College of Music at Florida State to build a one-of-a-kind pipe organ tailored specifically for Opperman Music Hall. The Rockwood Organ will be among the finest in the nation, a landmark instrument that will enhance the prestige of Florida State's organ and sacred music programs. In addition, the Rockwood's generous donation to the LeMoyne Arts Foundation has enabled the center to revitalize its renowned Helen Lind Sculpture garden.



THANK YOU TO OUR NEW & RENEWED MEMBERS!

APRIL 1ST, 2021 THROUGH JUNE 30TH, 2021

- | | | | |
|-----------------------|----------------------------------|-----------------------------------|------------------------------|
| Allison Edwards | George Dawson | Laura Youmans | Paul Ranney |
| Ann & Emory Hingst | Georgia Jahns | Lee Hinkle | Paula Carroll |
| Anne Rokyta | Georgia Turner | Maggie Cass | Rachel Hill Borntreger |
| Annelies Kynoch | Gerry Hammond | Margaret Collins | Raymond Gray |
| Anthony Quickle | Henry & Sharon Pollock | Margie Caroline Watkins | Rene Lynch |
| Arielle Raff | Hunter James Robinson | Marjorie Ann Grussing | Robert & Nancy Crevello |
| Barbara Buckingham | James Jones | Mark Baird | Robert Lide |
| Blessel Diao | James Taylor | Mark William Dignan & Eden Fshaie | Robert Parker |
| Brenda Salvas | Jason Lammert | Marti Saconchik-Pytel | Rochelle Davis |
| Brian McClain | Jayne Parker | Mary Ann Tonnacliff | Roger Leonard & Sam Hastings |
| Calvin & Rose Zongker | Jazmine Sanjuan Hernandez | Mary Beth McBride | Ronald & Ruth Hartung |
| Carl Martin Tomlinson | Jeanie Hinkle | Mary Chiles | Samantha Dutoit |
| Cicely Renee Mason | Jen Hobgood | Mary Irvine | Sandra Eimen |
| Cole Thomas | Jeri Winkleback | Mary P. Bachman | Sandy Wiggan |
| Colleen Hosford | Jessica Stewart | Maureen Parrott | Sara White |
| Dana Lynn Harrelson | Jody Rosenbaum | Meredith & Elsa McKinney | Sarah Nicole Painter |
| Danielle Taylor | Joel Dawson | Merli Baltazar | Scott Hannahs |
| Dave Bright | Julia Sura | Michael Cook | Sharon Schwerzel |
| David Beggs | Julie Holding | Michelle Pletch | Sonia McNelis |
| David Proctor | Julie McBride | Nageswara Tirumalasetty | Sonya Cloninger |
| Dee Lea | Kacy Flowers | Nancy Bell | Stephanie Leitch |
| Ed & Hilda Carney | Karen Gay | Nancy Domm | Stephen Revell |
| Edie Walker | Katee Tully & Helen Levine | Nancy Forinash | Sue Hobbs |
| Edwinna Griffith | Kathleen Brennan & Claude Hendon | Nathan Archer | Susan Harris |
| Eileen McCann | Kathy J. Ferrell | Natholyn Harris | Susan Joyce Allen |
| Eleanor Sue Dietrich | Katie & Blair Lilly | Nina Hatton | Suzanne Parker |
| Erin Wright | Kelly Emerson | Pat Williams | Teresa Coates |
| Eve Williams | Ken & Dyanne Ifland | Patty Williams | Timothy Hare |
| Gene Varn | Kristin Dozier & John Webb | Paul & Pat Nichols | Tonya Harris |
| | | | Wilma Lauder & Bud Carlson |



Non-Profit Org.
U.S. Postage
Paid
Tallahassee, FL.
Permit No. 31

Ways You Can Support LeMoyne's Work as we Share Art and Cultural Experiences with Everyone in Our Community.

Become a Member. If you're already a member, consider buying one of your friends or family members a LeMoyne Arts Membership.

Sponsor an Exhibit. LeMoyne holds several exhibits each year and your sponsorship of these exhibits helps us raise the quality of each exhibit to provide the best experience for our visitors and members.

Sponsor a Special Event. LeMoyne hosts at least three special events each year: Art & Soul Celebration, the Annual Holiday Show, and the Chain of Parks Art Festival. Sponsorships for these events support the events and help support programming and outreach efforts throughout the year.

Give to Our Art for Always Capital Campaign: Your gift will go toward the acquisition and renovation of a new home for LeMoyne's renowned art education program and to the expansion and revitalization of the Helen Lind Sculpture Garden and the historic Meginnis-Munroe House. Between now and July 31, **DOUBLE THE IMPACT OF YOUR GIFT** through the Kelly and Laurie Dozier challenge grant that matches Art for Always contributions dollar-for-dollar up to an aggregate of \$250,000.

Give to Support LeMoyne's Annual Ongoing Programming and Outreach: Your gift will ensure that the core mission of LeMoyne is secure and strong.

Create a Lasting Legacy Through Your Estate Plan: LeMoyne representatives are happy to visit with you, your family and your professional advisors as you consider making a provision for LeMoyne under your estate plan. Please contact LeMoyne Arts to schedule a time to meet.

Contact us at 850-222-8800 or speak to one of our staff members for more information.