

LeMoyné Arts

Zerbe Zeelebration

Expression & Evolution

APRIL 8 - MAY 8



Karl Zerbe, **King Vulture**, Acrylic and collage on mulberry paper, 72 x 44"



Chain of Parks ART FESTIVAL

PRESENTS

Zerbe Zelebration April 9th - 18th, 2021

Explore a citywide multi-media exhibition of Expressionist Movement artist Karl Zerbe's works as we mark the 50th anniversary of his retirement from FSU.

In person and virtual exhibitions, roundtables, custom Proof beer and social media interactive experiences featuring Karl Zerbe and artists he inspired can be found at LeMoyné Arts, Tallahassee International Artport Gallery, TCC Hurst Gallery, FAMU Foster-Tanner Fine Arts Gallery, Council on Culture & Arts and private collections in Tallahassee.

For more information visit ChainofParks.com



Major Partners



Additional Partners



The Zerbe Zelebration is a citywide multi-media exhibition of Expressionist Movement artist Karl Zerbe's works as we mark the 50th anniversary of his retirement from FSU. This Zelebration kicks off LeMoyné's Chain of Parks Art Festival for 2021! As a world-renowned artist and FSU professor, Zerbe entrusted LeMoyné Arts with the largest collection of his artwork in the world. LeMoyné Arts will be showing 8 never-before-seen pieces for the Zelebration, along with hosting lectures and round table discussions on civil rights, Zerbe in his time and ours, and birding (Zerbe is best known in Tallahassee for his printed bird collection, inspired by his time at St. Marks Wildlife Sanctuary).

Appreciations

Maria Zerbe Norton - For donating 4 Karl Zerbe paintings, providing content, & a great interview.

Kelly S. Dozier - For loaning her private collection of Zerbe's.

Linda Van Beck - For donating several Zerbe's to LeMoyné's Permanent Collection, providing content, being a Framing Sponsor, and allowing us to interview her.

Charles & Cynthia Tunnicliff - Framing Sponsor & a great interview.

Pamala Doffek - For her dedication to LeMoyné Art's Permanent Collection

Bob O'Lary & Katie Clark - Photographing LeMoyné Art's Permanent Collection

Strauss Gallery - For framing

Robert Smith - For his interview

Mike Copeland Productions - Interview videography & editing

Luka Sharron - Interview videography & editing

Powell Kreis - Interview videography & editing

Chain of Parks Art Festival - host of Zerbe Zelebration!

Karl Zerbe (1903 - 1972)

Karl Zerbe was born in Berlin, Germany but spent his youth in France before moving back to Germany. Karl Zerbe's father was an engineer, killed at the end of WWI in a bombing raid when Zerbe was around 15 years old. After his father died, his family moved back to Munich (where his mother was from). His family encouraged him to have a stable career, so he started as a chemistry student, but quickly switched over to art school.

Zerbe enjoyed international artistic success as an Expressionist, especially throughout Europe and the United States. Due to the Nazi crusade against his "degenerate art", Zerbe moved to Boston in 1934 where he was active in the formation of the Boston Expressionist movement. He became the head of the department of painting at the Boston Museum School, remaining there for twenty years. While in Boston, Zerbe began working in the rarely practiced ancient technique of encaustic, as well as developing new techniques in polymer, tempera, and acrylics, utilizing his original education in chemistry.

In 1954 he was invited to come to FSU as a visiting professor for one year but ended up loving the city, people, and climate so much that he remained in Tallahassee for the rest of his life, donating much of his time and reputation to the development of LeMoyne Art Foundation. Zerbe died in 1972, just one year after his Retirement from FSU.

Karl Zerbe's artwork not only demonstrates his masterly use of color and unusual techniques, but also his assertion that subject matter is the most important aspect of each piece. Expressionism not only provided Zerbe with a means to express his emotions and visions, but it also provided him with an avenue to register his protest regarding cultural events that were going on around him.

Boston Influence:

Known as an expressionist painter, Karl Zerbe along with Hyman Bloom and Jack Levine, achieved national recognition in the 1940s as the first generation of Boston Expressionists. They produced work that was shockingly different from the genteel work of older established Boston artists, such as John Singer Sargent and Edmund C. Tarbell. Although the Boston Expressionists differed stylistically from one another, they were linked by their interest in humanism as they perceived it in their surroundings in Boston. Their work was the beginning of a long tradition of humanist expressive work in Boston.



Encaustic: Zerbe is best known for his revival of the encaustic, or "hot wax" technique of painting, which was popular during the early Christian era and widely used in Roman and Greek portraiture. It was this very technique however, that caused Zerbe serious health problems. He developed severe allergic reactions to the fumes given off during the encaustic process, which forced him to abandon the medium



Chain of Parks
 ART FESTIVAL

Gallery Z!



Do you have a Karl Zerbe piece at home or your office?
How about a piece inZpired by Zerbe?

The Zerbe Zelebration team is calling for all collectors & artists to share photos, stories, or artwork that relates to Zerbe.


You can send it to us via:
<https://www.facebook.com/LeMoyneChainofParks>
<https://www.instagram.com/chainofparks>
Chainofparks@lemoyne.org
[#ZerbeZelebration](#) [#GalleryZ](#)



Chain of Parks
 ART FESTIVAL

Be the Z!

It's time to get creative:
 Recreate your favorite Zerbe at home (found objects, costumes, etc.)
[#BetheZ](#) [#ZerbeZelebration](#)





Chain of Parks
 ART FESTIVAL

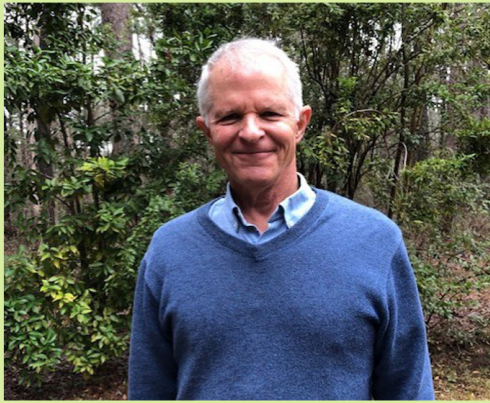
Zerbe state of mind...

Go to all 6 exhibit locations, take a selfie and share!
[#Zerbestateofmind](#) [#ZerbeZelebration](#)



Tallahassee
 Zerbe Zelebration: Exhibit Map
 Presented by:


Chain of Parks
 ART FESTIVAL



An optional \$20 donation at the event will automatically enter you into a contest to win a free Zerbe bird serigraph! The serigraphs will also be available for purchase at LeMoyne Arts for the Zelebration.

Outdoor event - Masks required
125 N. Gadsden St. Tallahassee, FL. 32301



ZerbZ BirdZ

#ZerbZBirdZ #ZerbeZelebration



SATURDAY, April 10th, from 11 - 12PM

Karl Zerbe was an avid birder and is best known in Tallahassee for his bird-themed artwork; most notably a collection of 12 serigraphs, produced by the LeMoyne Art Foundation.

For the Zerbe Zelebration, LeMoyne Arts will host guest speaker, **Dr. Todd Engstrom**, to discuss Zerbe's bird-related work along with other regional birding content.

Major Partners



Additional Partners



Dr. Preston McLane, Director, FSU Museum of Fine Arts

Reserve your FREE in-person ticket at chainofparks.org/zerbe-zelebration
125 N. Gadsden St. Tallahassee, FL. 32301



Karl Zerbe: in His Time and in Ours

#ZerbeZelebration

TUESDAY, April 13th, from 6 - 7PM

For the Zerbe Zelebration, LeMoyne Arts will host guest speaker, **Dr. Preston McLane**, who will explore the life and career of Karl Zerbe, situating his practice within the historical contexts, styles, and movements of his time while also challenging audiences to look critically at how Zerbe approached the subjects of his art works.

Small in-person event, 20 person limit
Masks required

Live stream on Chain of Parks Art Festival Facebook page

Major Partners



Additional Partners



For more Zerbe content and exclusive interviews, please visit chainofparks.org/zerbe-zelebration

KARL ZERBE (1903-1972) CHRONOLOGY

- 1903 Born in Berlin, Germany.
- 1904-1914 The family lived in Paris, France.
- 1914-1920 The family lived in Frankfurt, Germany.
- 1920 Studied chemistry at the Technische Hochschule, Friedburg.
- 1921-1923 Lived in Munich, where he studied painting at the Debschitz School, mainly under Josef Eberz.
- 1922 First one-man exhibition, Gurlitt Gallery, Berlin.
- 1924-1926 Worked and traveled in Italy on a fellowship from the City of Munich.
- 1926-1933 Lived in Munich, exhibiting at the Caspari Gallery and the Neue Sezession.
- 1932 An oil, Herbstgarten, (autumnal garden), of 1929, was acquired by the National-Galerie, Berlin; in 1937 the painting was destroyed by Nazis as "degenerate art."
- 1934 In January, arrived in the U.S. for a year's visit, leaving behind with friends in Munich a large number of works which have never been recovered. One-man exhibitions in Cambridge, Mass., and New York.
- 1935 In October, returned to U.S. as permanent resident.
- 1935-1937 Taught painting at the Fine Arts Guild, Cambridge, Mass.; traveled in Mexico, summer 1936 and 1937.
- 1937-1955 Head, Department of Painting, School of the Museum of Fine Arts, Boston.
- 1938 Spent the summer in France.
- 1939 Became a U.S. citizen. First use of encaustic.
- 1942 John Barton Payne Medal, Virginia Museum of Fine Arts.
- 1943 First Prize, Institute of Contemporary Art, Boston.
- 1944 Blair Purchase Prize, Art Institute of Chicago.
- 1945 Traveled with Barnum & Bailey Circus during the summer, sketches of circus for Fortune Magazine.
- 1946 Norman Wait Harris Silver Medal and Prize, Art Institute of Chicago.
- 1948 Third Prize, Carnegie Institute. Traveled in Italy during the summer.

- 1949 J. Henry Scheidt Memorial Prize, Pennsylvania Academy of The Fine Arts. First use of polymer tempera.
- 1950 Visiting Artist, Munson-Williams-Proctor Institute.
- 1951-1952 First retrospective exhibition, organized by The Institute of Contemporary Art, Boston.
- 1953 First Prize, Boston Arts Festival.
- 1954 Visiting Professor, Florida State University, Tallahassee. Traveled in the Northwest.
- 1955 Professor of Art, Florida State University, Tallahassee. First use of acrylic. Purchase Prize, University of Illinois. First Prize, Third Annual Exhibition of U.S. paintings, Bordighera, Italy.
- 1957 Citation for distinguished contribution and achievement in the arts, Conference on The Creative Arts, Boston University. Traveled to Oregon.
- 1957-1959 President, Artist's Equity.
- 1958 One of five judges for Ford Foundation Program; Humanities and the Arts. Chose ten artists for \$10,000 grants. During the summer, traveled to the Arctic (Churchill, Canada).
- 1959 Spent winter vacation on the island of Jamaica.
- 1960 In December traveled to Trinidad.
- 1961 Second retrospective exhibition, organized by the American Federation of Arts, Boston. Grant received from the Ford Foundation.
- 1962 Director, College Arts Association. In December, traveled to the Everglades. In April, received an Honorary Doctorate of Fine Arts degree from Florida State University. Third retrospective at the Whitney Museum of Art, sponsored by the Ford Foundation.
- 1963 Traveled in Peru and Brazil, Lima, Rio, Ouro Preto, Iguassu, Manaus, Belau.
- 1964 Awarded the Florida Development Commission Recognition from the State of Florida.
- 1971 Retired as Professor Emeritus from Florida State University (1954-1971).
- 1972 Death, November 28.

"Do not try to imitate anyone else. Try to work out problems in your own way." ~ Karl Zerbe

LEMOYNE ARTS PERMANENT COLLECTION

1. Old Man and a Tree
20 x 30 inches
1947



2. Old Man and Tree
28 x 18 inches
1947



3. Fish
22 1/2 x 34 3/4 inches
Date unknown



4. Tundra: yellow blossoming
24 x 36 inches
1958

5. From a Garden in Lima
(Gold Sun)
24.25 x 36.5 inches
1965



6. Rooster
40 x 50 inches
1971





- 7. Violin Player
12 x 18 inches
1948
- 8. Seated Girl
18 x 26 inches
1946
- 9. Two Actors
26 x 20 inches
1946
- 10. Olive Trees:
Southern France
17 x 24 inches
1930
- 11. Shepard
24 x 18 inches
1945
- 12. The Dancer
32 x 52 inches
1943



13



14



15



16



17



18

13. Fictitious Figure I
72 x 40 inches
1960-61
Donated by
Maria Zerbe Norton
for the Zelebration.

14. Landscape with
Scrap Metal
30 x 24 inches
1950

15. Mosaic Head in Brown
21 x 29 inches
Date unknown

16. Pastoral View
South of France
17 x 22 1/2 inches
1930

17. Cardinals - To Artemis
and Rudy Jegurt
14.5 X 17 inches
1950

18. Man with a Rooster #2
35 x 21 inches
1955



19. Great Hollywood Nude
45 x 60 inches
1969
On loan from the
Kelly & Laurie Dozier
Collection

20. Favella #1 (Morning)
50 x 50 inches
1965-69
Donated by
Maria Zerbe Norton
for the Zelebration.

21. Amazon Forest
76.5 X 40.25 inches
1967
Donated by Maria Zerbe Norton
for the Zelebration.

22. Red Sun
76 3/8 X 40 1/4 inches
1966
Donated by Maria Zerbe Norton
for the Zelebration.



23. Trinidad Black #1
36 x 23 inches
1961

24. Dancing Couple
36 X 50 inches
1961

25. Trinidad White #1
22 x 38 inches
1961

26. Touraco I
24 x 36.5 inches
1967
Donated by Linda Van Beck
for the Zelebration.



27. Sandhill Crane I
24 x 36.5 inches
1967
Donated by Linda Van Beck
for the Zelebration.

28. Touraco II
36 x 24 inches
1967
Donated by Linda Van Beck
for the Zelebration.





29



30

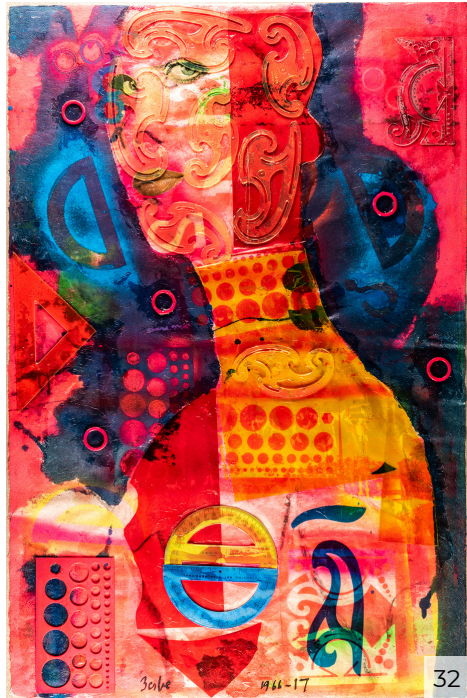
29. Shadow #1: Study
22 x 18 inches
1960

30. Two Masks
Black & White
50 x 36 inches
1963

31. Harlequin (14 Of 50)
41 x 30 1/4 inches
1967



31



32



33



34



35

32. Portrait of Lady B
24 x 36 inches
1966

33. Two Toucans Version 1
Blue Bellies (6 of 20)
41 x 29 inches
1967

34. Scarlet Ibis on Nest
33 x 23.5 inches
1968
Donated by Linda
Van Beck for the
Zelebration.

35. Landscape with
Letters (40/50)
33 x 23 inches
1966



36. Dark Angel #1
22 X 36 inches
1962

37. Copacabana #6
36 x 24 inches
1963

38. Relations #1
42 x 30 inches
1962

39. Elder #2
24 x 36 inches
1962



40. Italian Woman (21/48)
36 x 24 inches
1964 - 1965

41. White Alligators
29 x 40 1/2 inches
1968



Zerbe Celebration

April 9-18, 2021: LeMoyne Arts will be making Karl Zerbe's treasured bird serigraph collection available for purchase. These limited-edition serigraphs, silk screened by Karl Zerbe assisted by LeMoyne volunteers, will be available (unframed) for \$400 each, LeMoyne Arts members receive 10% off of purchase. Visit LeMoyne Arts in Downtown Tallahassee to invest in a piece of beautiful artwork... and history!



Eagle



Ibis



Sun Bitterns



Blue Vulture



Black Hawk



Hornbills



Owl



Ostrich



Tree Ducks



Two Egrets



White Heron



Two Toucans



Penguins

Upcoming Exhibit:
Tri-State Watercolorists
 May 21 - July 24



The Tallahassee Watercolor Society was established around 1980 to promote the art of watercolor painting in Tallahassee and surrounding communities in Florida, Alabama and Georgia. Two juried exhibits are sponsored each year for members, one in the Spring and the other in the Fall. Prestigious Signature Membership is earned when a member accumulates a specific number of points by exhibiting in these events.

Become a LeMoyne Member Today!

General Membership Benefits Include:

- Subscription to LeMoyne Arts Newsletter
- Member discount on classes & camps
- Free admission to Annual Holiday Show
- Invitation to annual Membership Social
- Discount on facility rental
- Pop-up member exclusive offers
- Your way to support the arts in Tallahassee!

Student/Senior: \$25

Individual: \$40

Family & Friends: \$70

K-12 Art & Science Teachers: Free

Upper Level Memberships Include:

General Membership Benefits Plus

- Membership to NARM (North American Reciprocal Museums)
- 10% Discount on all Gallery Shop and exhibit purchases

Supporter: \$150

Contributor: \$250

Receives 2 tickets to Art & Soul Celebration

Donor: \$500

Receives 2 tickets to Art & Soul Celebration,
 Annual LeMoyne Holiday Ornament,
 2 hours of free gallery rental

Benefactor: \$1000

Receives 2 tickets to Art & Soul Celebration,
 Annual LeMoyne Holiday Ornament,
 4 hours of free gallery rental

Membership forms at Front Desk!



125 North Gadsden Street
 Tallahassee, FL 32301
 850.222.8800
 contactus@lemoyne.org
 LeMoyne.org